

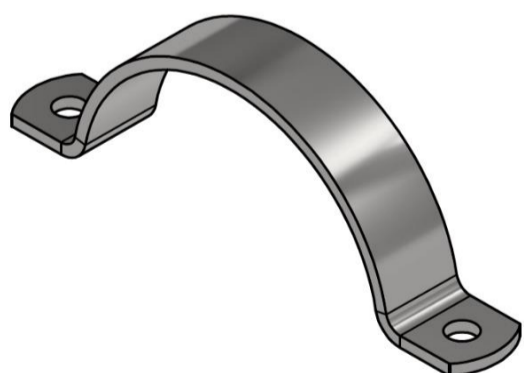
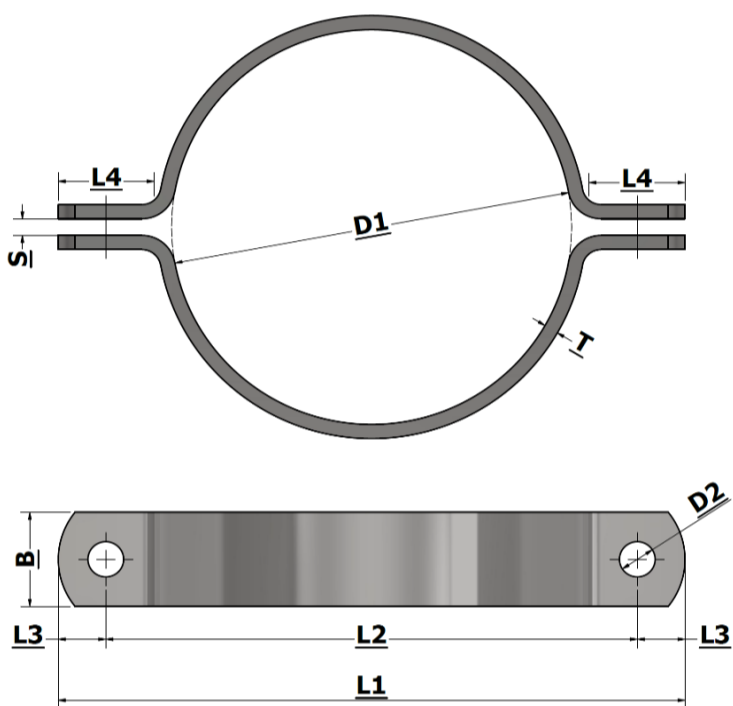
Halsjern Pipe clamp



Todelt fladståls rørbøjle
Fås sorte, primet, galvaniseret,
rustfri AISI 304L og AISI 316L



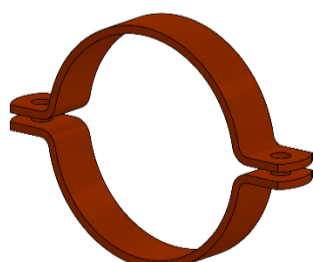
Two-part pipe clamp
Black, primed, hot-dip galvanized,
stainless AISI 304L and AISI 316L



Str. / Size	Rørdiameter / Pipediameter	DN str. / DN size	Tomme str. / Inch size	Bredde / Width	Tykkelse/ Thickness	Luft / Space	L1	L2	L3	L4	Bolt hul / Bolt hole	Bolt
D1 (mm)	(mm)	(mm)	(tommer)	B (mm)	T (mm)	S (mm)	(mm)	(mm)	(mm)	(mm)	D2 (mm)	(mm)
42	42,4	32	1 1/4	50	8	9	158	108	25	50	18	M16
48	48,3	40	1 1/2	50	8	9	164	114	25	50	18	M16
51	51			50	8	9	167	117	25	50	18	M16
54	54			50	8	9	170	120	25	50	18	M16
57	57	50		50	8	9	173	123	25	50	18	M16
60	60,3	50	2	50	8	9	176	126	25	50	18	M16
64	63,5			50	8	9	180	130	25	50	18	M16
67	67			50	8	9	183	133	25	50	18	M16
70	70			50	8	9	186	136	25	50	18	M16
73	73			50	8	9	189	139	25	50	18	M16
76	76,1	65	2 1/2	50	8	9	192	142	25	50	18	M16
80	80			50	8	9	196	146	25	50	18	M16
84	84			50	8	9	200	150	25	50	18	M16
89	88,9	80	3	50	8	9	205	155	25	50	18	M16
97	97			50	8	9	213	163	25	50	18	M16
101	101,6	90	3 1/2	50	8	9	217	167	25	50	18	M16
104	104			50	8	9	220	170	25	50	18	M16
108	108	90		50	8	9	224	174	25	50	18	M16
110	110			50	8	9	226	176	25	50	18	M16
114	114,3	100	4	50	8	9	230	180	25	50	18	M16
120	120			50	8	9	236	186	25	50	18	M16
122	122			50	8	9	238	188	25	50	18	M16
129	129			50	8	9	245	195	25	50	18	M16
133	133,1	100		50	8	9	249	199	25	50	18	M16
140	139,7	125	5	50	8	9	256	206	25	50	18	M16
146	146			50	8	9	262	212	25	50	18	M16
154	154			50	8	9	270	220	25	50	18	M16
159	159	125		50	8	9	275	225	25	50	18	M16
168	168,3	150	6	50	8	9	284	234	25	50	18	M16
178	177,8			50	8	9	294	244	25	50	18	M16
194	193,7	175	7	50	8	9	310	260	25	50	18	M16
200	200			50	8	9	316	266	25	50	18	M16
220	219,1	200	8	50	8	9	336	286	25	50	18	M16
225	225			50	8	9	341	291	25	50	18	M16
245	244,5	200		50	8	9	361	311	25	50	18	M16
250	250			50	8	9	366	316	25	50	18	M16
267	267	200		50	8	9	383	333	25	50	18	M16
273	273	250	10	50	8	9	389	339	25	50	18	M16
300	300			50	8	9	416	366	25	50	18	M16
318	318			50	8	9	434	384	25	50	18	M16
324	323,9	300	12	50	8	9	440	390	25	50	18	M16
356	355,6	350	14	50	8	9	472	422	25	50	18	M16
368	368	350		50	8	9	484	434	25	50	18	M16
406	406,4	400	16	50	8	9	522	472	25	50	18	M16
419	419	400	16 1/2	50	8	9	535	485	25	50	18	M16
457	457,2	450	18	50	8	9	573	523	25	50	18	M16
470	470			50	8	9	586	536	25	50	18	M16
508	508	500	20	50	8	9	624	574	25	50	18	M16
521	521			50	8	9	637	587	25	50	18	M16
610	610	600	24	50	8	9	726	676	25	50	18	M16
711	711,2	700	28	50	8	9	827	777	25	50	18	M16
813	813	800	32	50	8	9	929	879	25	50	18	M16



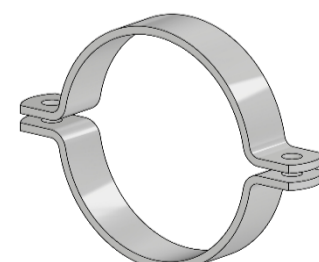
Sort
Black



Primet
Primed



Galvaniseret
Hot-dip galvanized



Rustfri AISI 304L/316L
Stainless AISI 304L/316L