

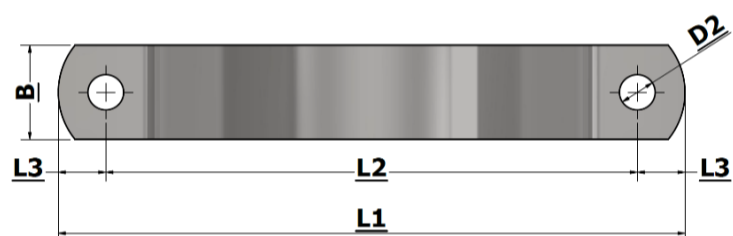
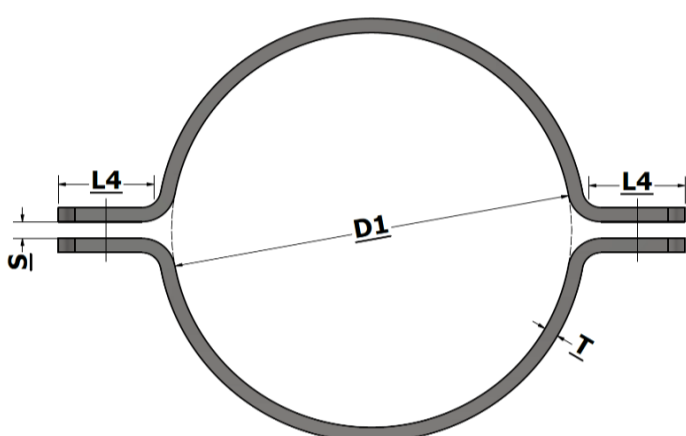
Halsjern Pipe clamp



Todelt fladståls rørbøjle
Fås sorte, primet, galvaniseret,
rustfri AISI 304L og AISI 316L



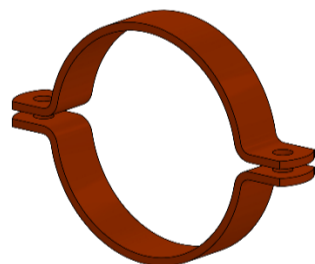
Two-part pipe clamp
Black, primed, hot-dip galvanized,
stainless AISI 304L and AISI 316L



Str. / Size	Rørdiameter / Pipediameter	DN str. / DN size	Tomme str. / Inch size	Bredde / Width	Tykkelse/ Thickness	Luft / Space	L1	L2	L3	L4	Bolt hul / Bolt hole	Bolt
D1 (mm)	(mm)	(mm)	(tommer)	B (mm)	T (mm)	S (mm)	(mm)	(mm)	(mm)	(mm)	D2 (mm)	(mm)
194	193,7	175	7	130	20	25	434	334	50	100	33	M30
200	200			130	20	25	440	340	50	100	33	M30
220	219,1	200	8	130	20	25	460	360	50	100	33	M30
225	225			130	20	25	465	365	50	100	33	M30
245	244,5	200		130	20	25	485	385	50	100	33	M30
250	250			130	20	25	490	390	50	100	33	M30
267	267	200		130	20	25	507	407	50	100	33	M30
273	273	250	10	130	20	25	513	413	50	100	33	M30
300	300			130	20	25	540	440	50	100	33	M30
318	318			130	20	25	558	458	50	100	33	M30
324	323,9	300	12	130	20	25	564	464	50	100	33	M30
356	355,6	350	14	130	20	25	596	496	50	100	33	M30
368	368	350		130	20	25	608	508	50	100	33	M30
406	406,4	400	16	130	20	25	646	546	50	100	33	M30
419	419	400	16 1/2	130	20	25	659	559	50	100	33	M30
457	457,2	450	18	130	20	25	697	597	50	100	33	M30
470	470			130	20	25	710	610	50	100	33	M30
508	508	500	20	130	20	25	748	648	50	100	33	M30
521	521			130	20	25	761	661	50	100	33	M30
610	610	600	24	130	20	25	850	750	50	100	33	M30
711	711,2	700	28	130	20	25	951	851	50	100	33	M30
813	813	800	32	130	20	25	1053	953	50	100	33	M30



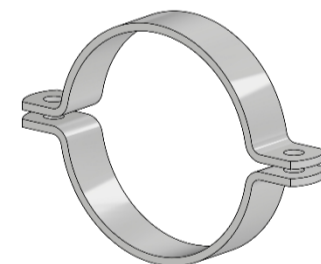
Sort
Black



Primet
Primed



Galvaniseret
Hot-dip galvanized



Rustfri AISI 304L/316L
Stainless AISI 304L/316L

